

# QualSoft

## Table of Contents

### Barcode Preview

*Text*

*Required*

*Barcodes*

*Send to Clipboard*

### Barcode Settings

*Human Readable*

*Add Checksum*

*Show Checkdigit*

### Preferences

*Windows Always on Top*

*Disable Startup Screens*

*Show Bearer Bars*

### Order Form

### Registration

*Registration and ordering*

*Pricing*

*Ordering by Credit card*

*Ordering by check or money order*

*Licence Agreement*

### Appendix A

### Limitation of liability

### **Limitation of Liability**

QualSoft. makes no warranties, either express or implied, regarding the enclosed, including merchantability or fitness for a particular purpose.

QualSoft. excludes any warranty coverage for incidental or consequential damages.

# QualSoft

## Barcode Preview



### ***Text***

Enter the number of characters to generate a barcode.

### ***Required***

Shows the number of characters needed to make a barcode.

For details of the number of characters needed for each barcode please refer to Appendix A

### ***Barcodes***

You have a selection of over 30 different types of barcodes to choose from.

Please note all barcodes have different requirements. Please refer to Appendix A.

### ***Send to Clipboard***

The ClipSend application has been set up to allow the easy use of barcodes within your favourite windows applications. By using send to clipboard, barcodes can be simply placed within your documents. To place a barcode within your document use Send to Clipboard followed by Edit, Paste

***Text***

Enter the numbers or characters to generate a barcode.

***Required***

Shows the number of characters needed to make a barcode.

For details of the number of characters needed for each barcode please refer to Appendix A.

### ***Barcodes***

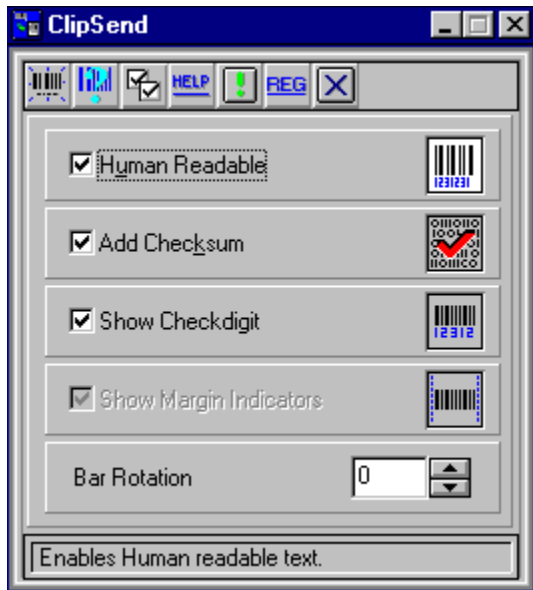
You have a selection of over 30 different types of barcodes to choose from.  
Please note all barcodes have different requirements. Please refer to Appendix A.

### ***Send to Clipboard***

The ClipSend application has been set up to allow the easy use of barcodes with in your favourite windows applications. By using send to clipboard barcodes can be simply placed within your documents. To place a barcode within your document use Send to Clipboard followed by Edit, Paste.

# QualSoft

## Barcode Settings



### ***Human Readable***

Allows the text to be read by the human eye.

### ***Add Checksum***

Adds a digit to the end of the barcode to allow the scanner to verify that it has read it correctly. Depending on the type of barcode selected this option may not be available.

### ***Show Checkdigit***

Determines whether the calculated checksum is added to the end of the human readable text.

### ***Show Margin Indicators***

Shows whether the barcodes have a margin included.

Depending on the type of barcode selected this option may not be available

### ***Bar Rotation***

Allows you to select the desired rotation for each barcode.

Available rotations are 0 , 90 , 180 , 270 degrees.



***Human Readable***

Allows the text to be read by the human eye.

***Add Checksum***

Adds a digit to the end of the barcode to allow the scanner to verify that it has read it correctly.

Depending on the type of barcode selected this option may not be available.

***Show Checkdigit***

Determines whether the calculated checksum is added to the end of the human readable text.

***Show Margin Indicators***

Shows whether the barcodes have a margin included.

Depending on the type of barcode selected this option may not be available.

***Bar Rotation***

Allows you to select the desired rotation for each barcode.  
Available rotations are 0 , 90 , 180 , 270 degrees.

# QualSoft

## Preferences



### ***Windows Always on Top***

Allows ClipSend to always be on top of the program that you are working on.

### ***Disable Startup Screen***

Enables you to have the QualSoft logo and registration status present every time you start up ClipSend.

### ***Show Bearer Bars***

On the barcodes ITF-14 and ITF-6 the bearer bars will appear on the top and bottom of the code.

***Windows Always on Top***

Allows ClipSend to always be on top of the program that you are working on.

***Disable Startup Screen***

Enables you to have the QualSoft logo and registration status present every time you start up ClipSend.



***Show Bearer Bars***

On the barcodes ITF-14 and ITF-6 the bearer bars will appear on the top and bottom of the code.





## Registration

### **Registration and Ordering**

All orders are subject to the QualSoft License Agreement.

When you register the software, you will receive an e-mail message with the Registration Key. When you receive this information, bring up the Registration box and enter the Registration Key exactly as you see in the e-mail.

Once the software is registered, the initial startup screen will display the fact that the software is registered.

### **Pricing**

A single user license of ClipSend is \$69.95.

See the QualSoft home page: <http://www.qualsoftsoftware.com> for current pricing and volume discounts.

### **Ordering by credit card:**

You can place secured credit card orders via the World Wide Web from the QualSoft home page: <http://www.qualsoftsoftware.com>.

For fax or mail orders use the Order Form for Credit Card Orders.

### **Ordering by check or money order:**

To order by check or money order drawn in US dollars on US bank use the Order Form for Check or Money Orders.

### **Licensing**

QualSoft, © Copyright 1997, 1998, All Rights Reserved..

You should carefully read the following terms and conditions before using this software. Unless you have a different license agreement signed by QualSoft, your use of this software indicates you are accepting the terms and conditions.

### **Registered Version**

One registered copy of ClipSend may either be used by a single person who uses the software personally on one or more computers, or installed on a single workstation used non-simultaneously by multiple people, but not both. You may access the registered version of ClipSend through a network, provided that you have obtained individual licenses for the software covering all workstations that will access the software through the network. For instance, if 5 different workstations will access ClipSend on the network, each workstation must have its own ClipSend license, regardless of whether they use it at different times or concurrently.

### **Governing Law**

This agreement shall be governed by the laws of England

### **Disclaimer of Warranty**

THIS SOFTWARE AND THE ACCOMPANYING FILES ARE SOLD "AS IS" AND WITHOUT WARRANTIES AS TO PERFORMANCE OF MERCHANTABILITY OR ANY OTHER WARRANTIES WHETHER EXPRESSED OR IMPLIED. NO WARRANTY OF FITNESS FOR A PARTICULAR PURPOSE IS OFFERED.

Good data processing procedure dictates that any program be thoroughly tested with non-critical data before relying on it. The user must assume the entire risk of using the program. ANY LIABILITY OF THE SELLER WILL BE LIMITED EXCLUSIVELY TO PRODUCT REPLACEMENT OR REFUND OF PURCHASE PRICE.

Once the software is registered, the initial startup screen will display the fact that the software is registered.

## ***Registration and Ordering***

All orders are subject to the QualSoft License Agreement.

When you register the software, you will receive an e-mail message with the Registration Key. When you receive this information, bring up the Registration box and enter the Registration Key exactly as you see in the e-mail.

Once the software is registered, the initial startup screen will display the fact that the software is registered

***Pricing***

A single user license of ClipSend is \$69.95.

See the QualSoft home page: <http://www.qualsoftsoftware.com> for current pricing and volume discounts.

***Ordering by credit card:***

You can place secured credit card orders via the World Wide Web from the QualSoft home page:  
<http://www.qualsoftsoftware.com>.

For fax or mail orders use the Order Form for Credit Card Orders.

***Ordering by check or money order:***

To order by check or money order drawn in US dollars on US bank use the Order Form for Check or Money Orders.



## ***Licensing***

QualSoft, © Copyright 1997, 1998, All Rights Reserved..

You should carefully read the following terms and conditions before using this software. Unless you have a different license agreement signed by QualSoft, your use of this software indicates you are accepting the terms and conditions.

### **Registered Version**

One registered copy of ClipSend may either be used by a single person who uses the software personally on one or more computers, or installed on a single workstation used non-simultaneously by multiple people, but not both. You may access the registered version of ClipSend through a network, provided that you have obtained individual licenses for the software covering all workstations that will access the software through the network. For instance, if 5 different workstations will access ClipSend on the network, each workstation must have its own ClipSend license, regardless of whether they use it at different times or concurrently.

### **Governing Law**

This agreement shall be governed by the laws of England

### **Disclaimer of Warranty**

THIS SOFTWARE AND THE ACCOMPANYING FILES ARE SOLD "AS IS" AND WITHOUT WARRANTIES AS TO PERFORMANCE OF MERCHANTABILITY OR ANY OTHER WARRANTIES WHETHER EXPRESSED OR IMPLIED. NO WARRANTY OF FITNESS FOR A PARTICULAR PURPOSE IS OFFERED.

Good data processing procedure dictates that any program be thoroughly tested with non-critical data before relying on it. The user must assume the entire risk of using the program. ANY LIABILITY OF THE SELLER WILL BE LIMITED EXCLUSIVELY TO PRODUCT REPLACEMENT OR REFUND OF PURCHASE PRICE.

Once the software is registered, the initial startup screen will display the fact that the software is registered.







## Order Form

Order form

Print and mail or fax this order form to: Public (software) Library: (PsL)

Fax: 1-713-524-6398  
E-mail: 30350@pslweb.com  
Address: PsL, P.O. Box 35705, Houston, TX 77235-5705 USA.

-----  
Item #30350

Single User License

\_\_\_\_\_ copies at \$69.95 each = \_\_\_\_\_

Site License

5 users at:	\$279.80=	_____
25 users at:	\$1,259.10=	_____
50 users at:	\$1,748.75=	_____
100 users at:	\$2,798.00=	_____
250 users at:	\$4,197.00=	_____

Total payment = \_\_\_\_\_

Billing Information:

Credit card:  MC  Visa  AMEX  Discover

Name on card: \_\_\_\_\_

Card Number: \_\_\_\_\_ Expires: \_\_\_\_\_

Billing Address: \_\_\_\_\_

Signature: \_\_\_\_\_

Registration Information:

Name: \_\_\_\_\_ (if different than above)



**Limitation of Liability**

QualSoft. makes no warranties, either express or implied, regarding the enclosed, including merchantability or fitness for a particular purpose.

QualSoft. excludes any warranty coverage for incidental or consequential damages.



## Appendix A - Barcode Details

The following list contains the details of each barcode supported within the ClipSend application.

4-State	Variable length	Alphanumeric
Codabar	Variable length	Alphanumeric
Code 11	Variable length	Alphanumeric
Code 128	Variable length	Alphanumeric
Code 39	Variable length	Alphanumeric
Code 93	Variable length	Alphanumeric
Code B	Variable length	Numeric
EAN-128	Variable length	Alphanumeric
EAN-8	Fixed at 8	Numeric
EAN 13	Variable length	Numeric
EAN 13 +2	Variable length	Numeric
EAN 13 +5	Variable length	Numeric
EAN 8 +2	Variable length	Numeric
EAN 8 +5	Variable length	Numeric
Ex Code 93	Variable length	Full ASCII
FIM A	Fixed at 1	Fixed Code
FIM B	Fixed at 1	Fixed Code
FIM C	Fixed at 1	Fixed Code
I-2 of 5	Variable pairs	Numeric
ITF-14	Fixed at 14	Numeric
ITF-6	Fixed at 6	Numeric
MSI	Variable length	Numeric
POSTNET ZIP	Fixed at 5	Numeric
POSTNET ZIP+4	Fixed at 9	Numeric
POSTNET DPBC	Fixed at 11	Numeric
RM4SCC	Variable length	Alphanumeric
Telepen ASCII	Variable length	Alphanumeric
Telepen bgn num end	Variable length	Alphanumeric
Telepen numeric	Variable length	Alphanumeric
UPC-A	Fixed at 12	Numeric
UPC-E0	Fixed at 7	Numeric
UPC-A +2	Fixed at 14	Numeric
UPC-A +5	Fixed at 18	Numeric
UPC-E +2	Fixed at 9	Numeric
UPC-E +5	Fixed at 12	Numeric

